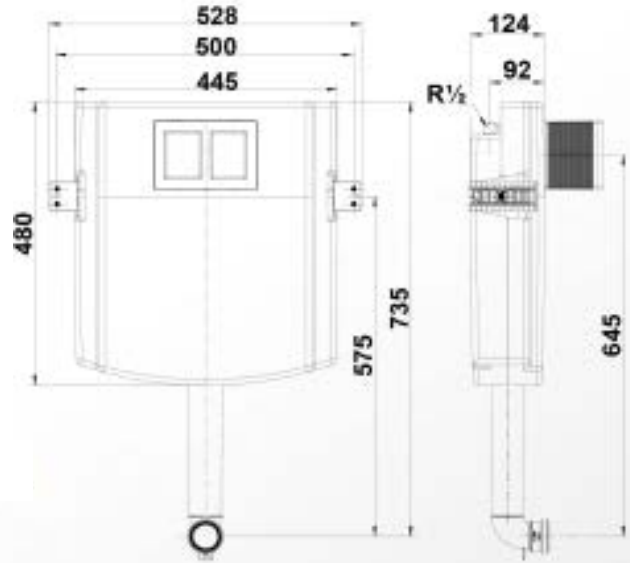
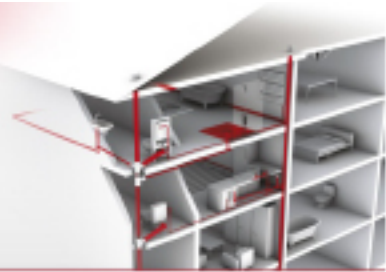


# Toilets | CISTERN TO BE CONCEALED

Codes : RESADIS12



## ■ FUNCTION :

- Double volume cistern to be concealed for wall-hung WC

## ■ DESCRIPTION :

- Dual flush mechanism and Acoustic class I fill valve, factory setting of 6 and 3 liters, button function transmitted to INEO flush valve via flexible cables
- Adjustable flushing elbow
- Noise and condensation insulated shell

## ■ CHARACTERISTICS :

- Materials: Polystyrene cistern
- Dimensions: height 480 mm - width: 445 mm – depth: 120 mm

## ■ ACCESSORIES :

- 2-part angle valve connection set R ½
- Plate to be ordered separately

## ■ IMPLEMENTATION :

- For installation in/onto solid walls

## ■ CONDITIONING :

- Packed in box

## ■ QUALITY - ENVIRONMENT :

ISO 9001  
ISO 14001  
ISO 50001  
BUREAU VERITAS  
Certification



DATE .....